



The Inclusive Sustainable New Communities (ISNC) Project

ISNC is a collaboration between the Government of Uganda (GoU) through the Ministry of Local Government, United Nations Development Programme (UNDP) and the Republic of Korea. The project is based on the Korean Saemaul Undong (SMU, New Village Movement) model which was used in the early 1970s to develop the rural communities. The SMU model promotes transformation at community level through self-help,

diligence and cooperation.

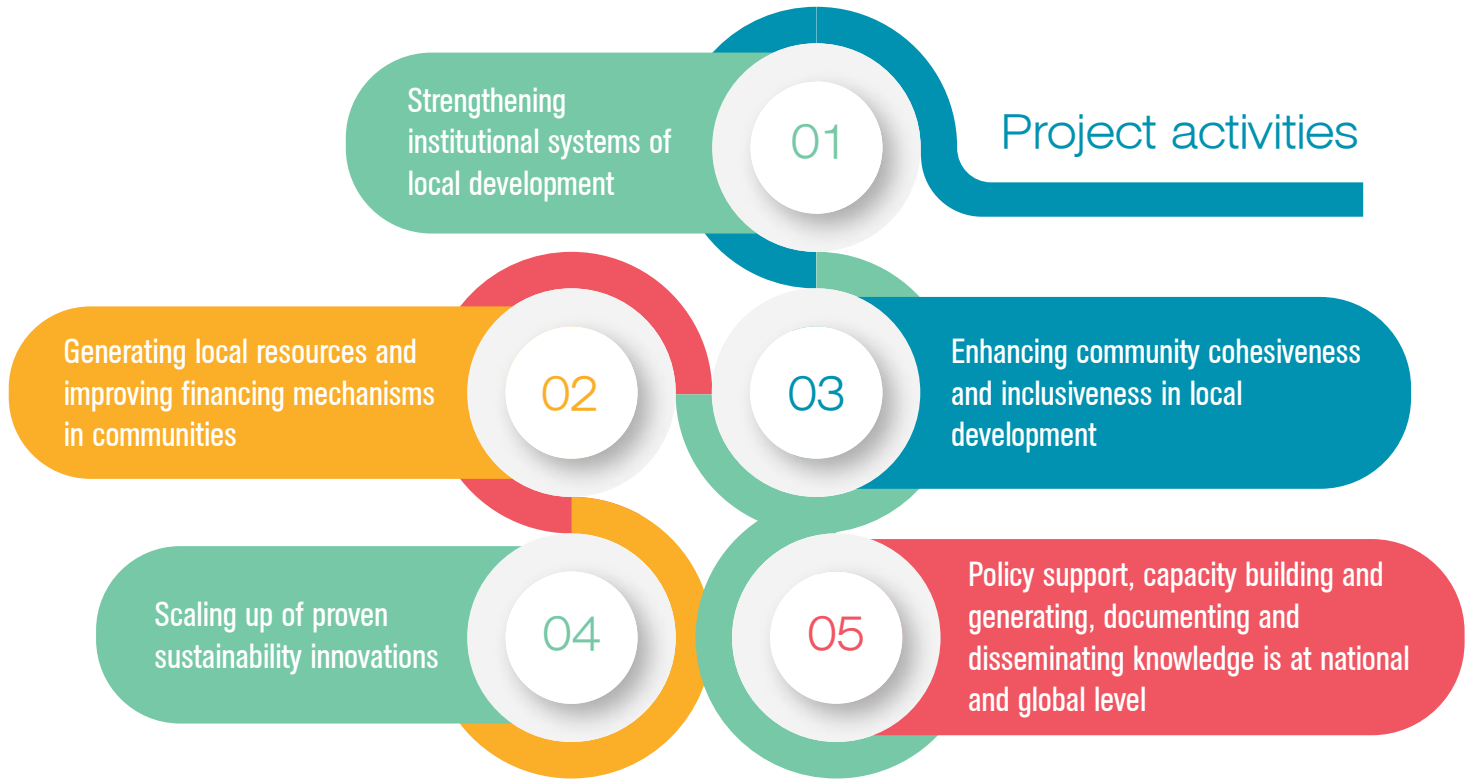
SMU builds a mindset of confidence and “can do” attitude, a shared vision for a better life and diligence sustained by volunteerism. Communities are able to re-habilitate village infrastructure, improve living conditions in the locality and significantly increase household incomes through small scale projects



The project is working with in the three local governments of **Kabarole Luuka and Maracha Districts**

Main Objective

To support Uganda's transformation through community-driven integration and sustainable local development



WHO WE WORK WITH

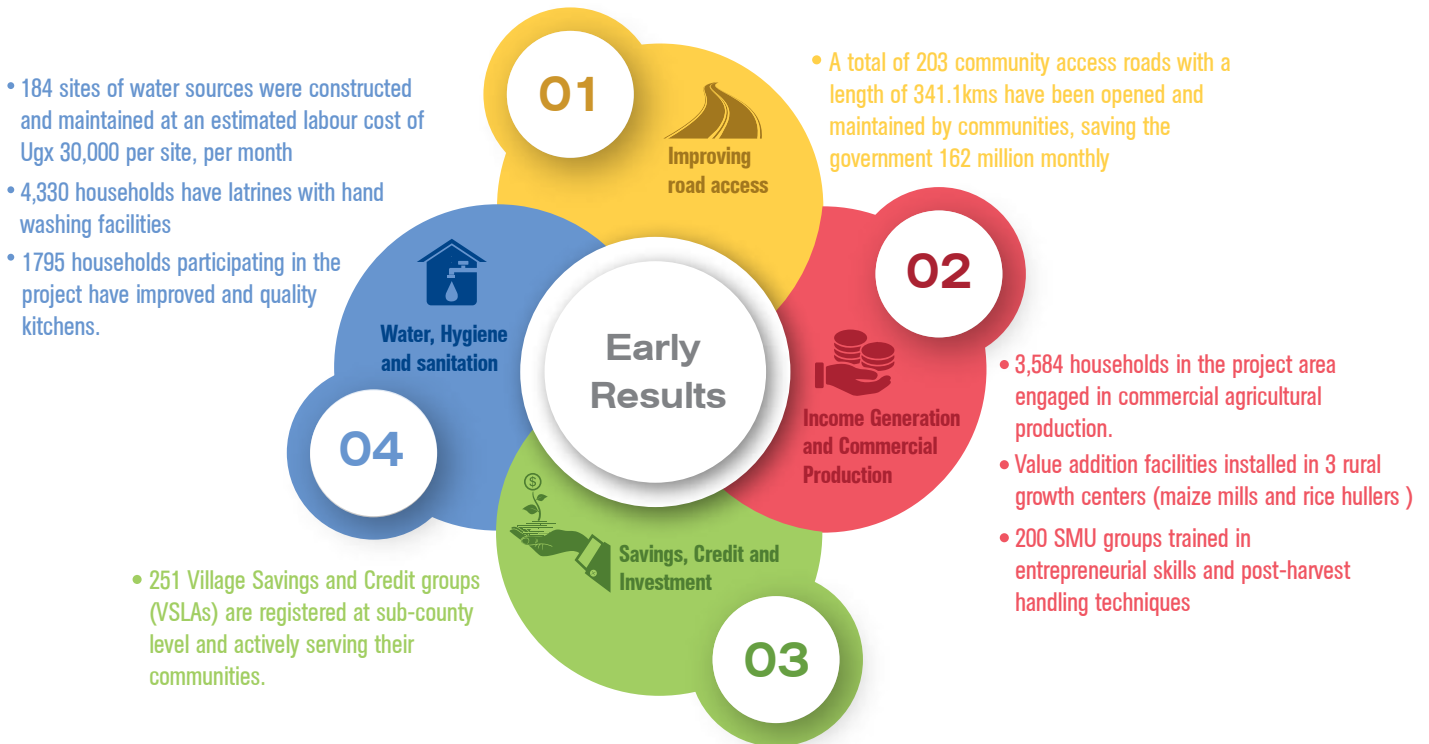
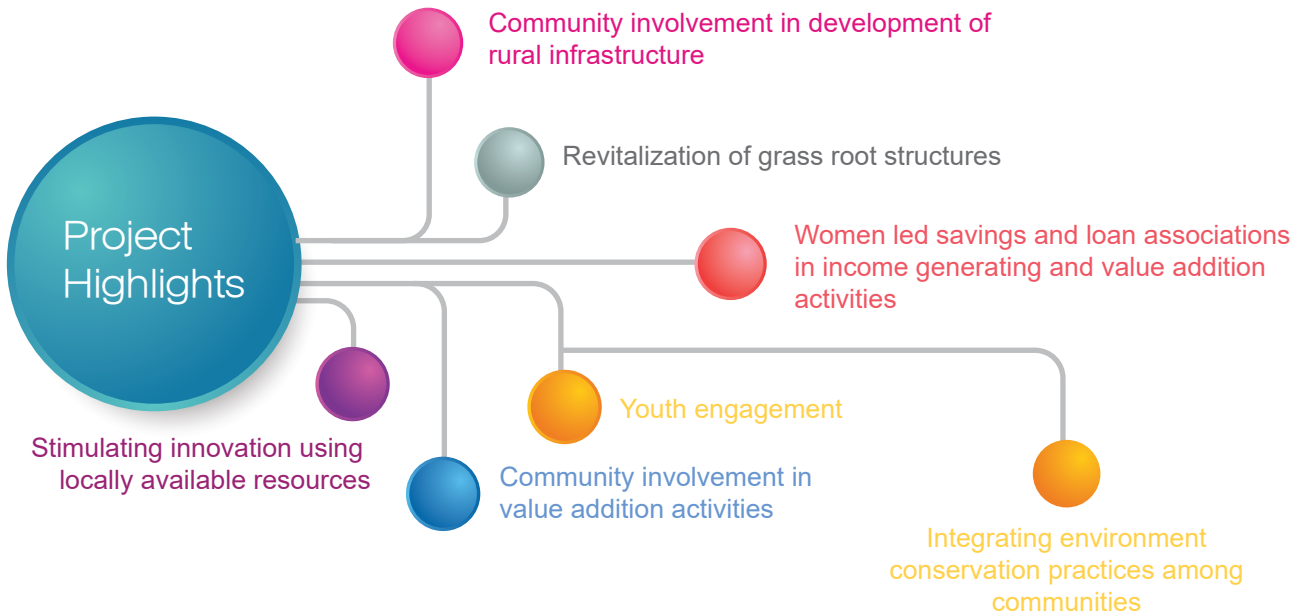


District local governments, farmers, distributors, community based services

LOCATION



- Kabarole district** | Kasunganyanja, Kaina, Mujunju, South East Ward, and East ward in Kibiito Sub-county,
- Maracha district** | Otravu, Kimirui, Mundru, Kamaka in Oluffe Sub-county
- Luuka district** | Buwologoma in Bukanga Sub-county





UNDP in Uganda

Plot 11, Yusuf Lule Road, Nakasero
PO Box 7184, Kampala, Uganda
Tel: (+256) 417 - 112100/301
Fax (+256) 414-344801
Email: registry.ug@undp.org
www.ug.undp.org

Ministry of Local Government

Workers' House
2nd Floor, Southern Wing
PO Box 7037, Kampala
Tel: (+256) 041 341224
Fax: (+256) 041 258127/347339
Email: ps@molg.go.ug
www.molg.go.ug